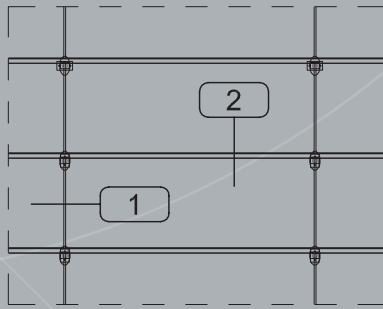




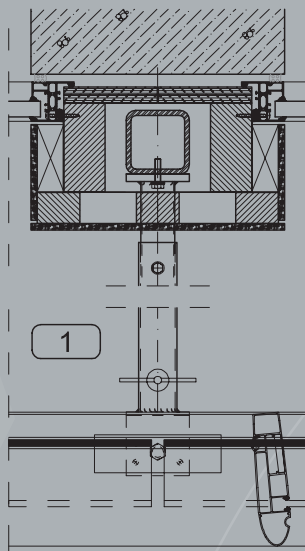
Climate active façade

LUMC, Leiden



Design:
EGM Architecten

Client:
Heijmans Bouw BV



System description:

- Double skin façade construction installed with stainless steel tie-rods
- Additional statically required supports to resist wind load have been incorporated in the construction
- Open glass façade which can be approached from two sides for maintenance purposes. Internal façade has been adjusted to accommodate this

Details:

- Aluminum Curtain Wall
- Aluminum windows
- Aluminum entrances and revolving doors
- Steel internal door- and window frames

